



tajo 2000 vitaq



TECNICAL SHEET 05/2015 | IPO5020

SCOPE

Tajo ANTILIME series are manually operated metallic ball valves that include the VITAQ SYSTEM an anti-lime system that minimizes the lime effects over the valve.

By its design and raw materials are intended to be used in:

Drinking water networks.
Water supply connection.
Plumbing networks
Hot water networks.
Heating systems.

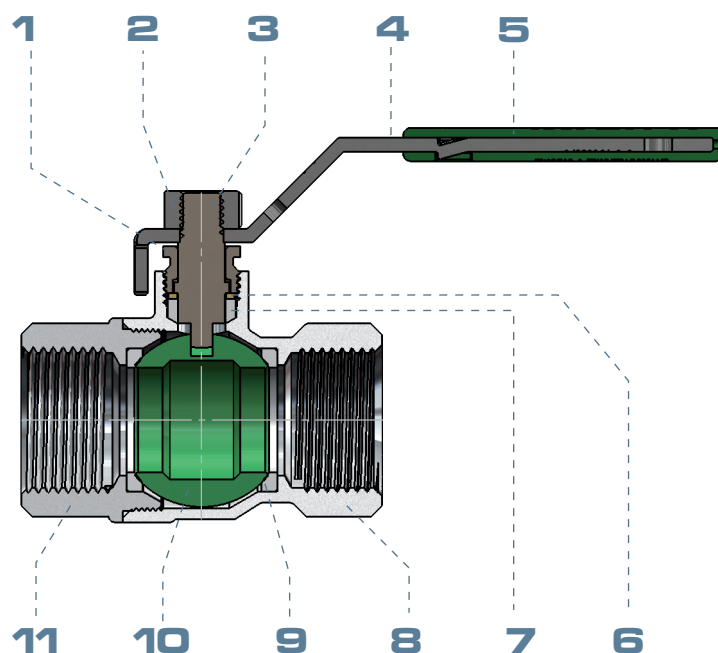
In general all those applications where it is required a valve to stop the fluid supply, assuring the leaktightness in accordance to the working conditions.

SERVICE CONDITIONS

Nominal pressure:	50 bar
Test pressure:	75 bar
Temperature range:	-20° up to 140°C excluding frozen.
Fluid:	Drinking water and hot water.

COMPONENTS

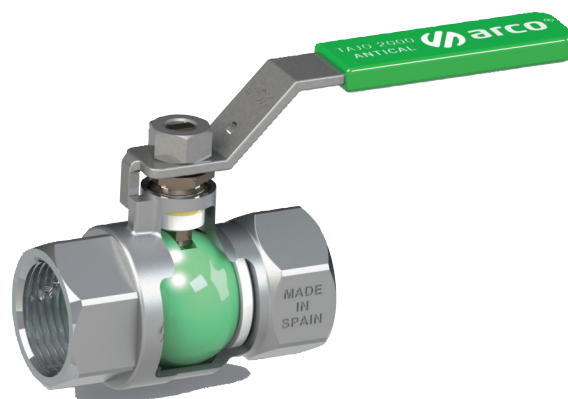
Item	Component	Material	Treatment
1	Sealing gland nut	European Brass CW614N	Nickel plated
2	Handle nut	Stainless steel	
3	Stem	European Brass CW614N	Nickel plated
4	Handle	Stainless steel	
5	Cover	LDPE	
6	Washer	European Brass CW614N	Nickel plated
7	Sealing gland nut	PTFE	
8	Body	European Brass CW617N	Chrome plated
9	Seat	PTFE	
10	Ball	European Brass CW614N	Teflon
11	Lateral	European Brass CW617N	Chrome plated



MAIN CONSTRUCTIVE FEATURES

Vitaq Ball

Spherical closure is made in brass alloy CW602N and its anti-lime surface finished guaranty a smooth maneuver along the time and increase the valve life span. In addition to these features we must add that the VITAQ SYSTEM is the perfect solution to prevent lime problems, that can make useless the valve, and maintain the flow rate constant along the time, avoiding the lime adhere to it.



Body and Lateral

Main body manufactured in European brass alloy CW617N, by the mean of a hot stamping process. This process confers to the European brass alloy the following advantages against casting parts:

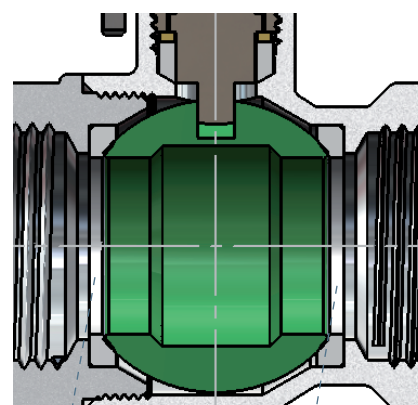
- Pores and bumpy texture absence.
- Surfaces with better finished.
- Higher mechanical endurance.

Seats and Sealing Gland

Seats and sealing gland are made in PTFE, avoiding internal and external leaktighness due to its perfect fit on metallic surfaces

Internal Leaktighness (Close position)

Internal leaktighness is assured in both directions by the PTFE seat that press against the spherical closure.

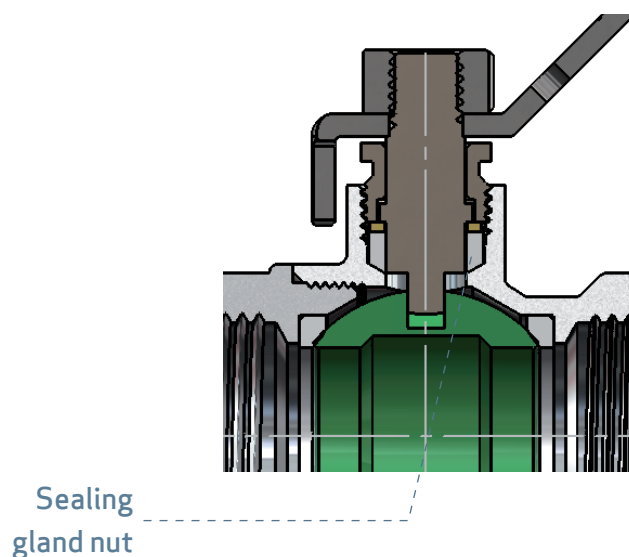


PTFE Seat

MAIN CONSTRUCTIVE FEATURES

External Leaktighness (Open position)

External leaktighness through the stem is assured by a PTFE sealing gland allowing its retightening if necessary.

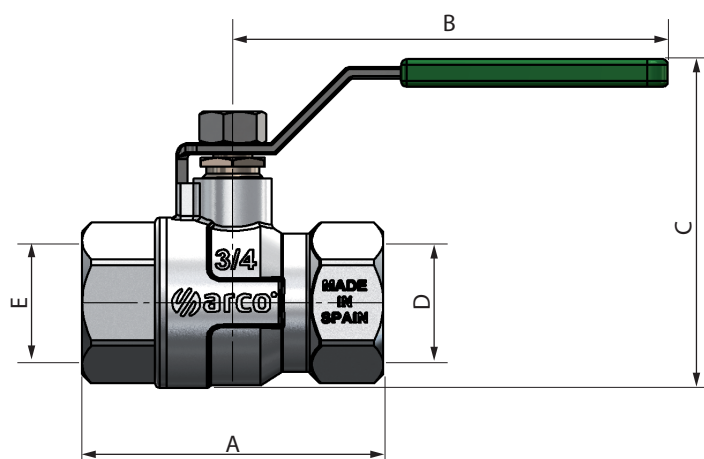


DIMENSIONS

Female - female. Lever handle

Size	A	B	C	D	E
1/2 HH	60	93	62	G 1/2	G 1/2
3/4 HH	44	93	70	G 3/4	G 3/4
1 HH	80	112	81	G 1	G 1
1 ¼ HH	89	112	90	G 1 ¼	G 1 ¼
1 ½ HH	108	152	107	G 1 ½	G 1 ½
2 HH	125	152	127	G 2	G 2
2 ½ HH	150	172	142	G 2 ½	G 2 ½

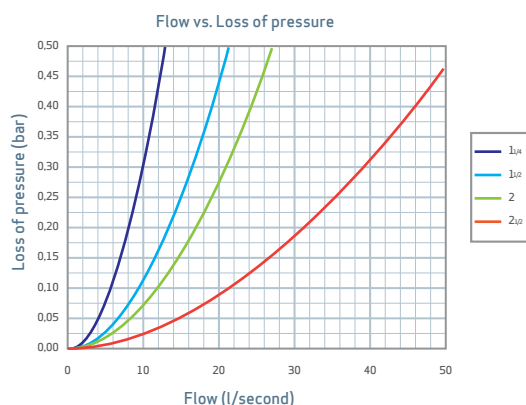
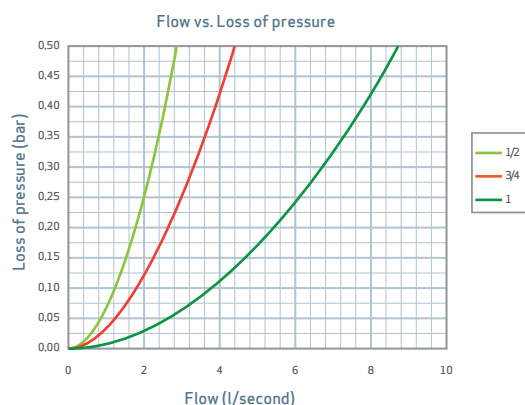
Threads (G) ISO 228





HYDRAULIC FEATURES

TAJO VITAQ 2000 series have been tested in our laboratory, hydraulic features obtained according to European Standard EN 1267.



INSTALLATION AND ASSEMBLY

Hold the valve from faces of the hexagons, never from the central part or the its neck, that will avoid internal components deformations (in other case valve could be damaged inevitably).

The maximum valve life is obtained with the closure sphere in the full open or close position, it is recommended do not work in intermediate positions for long time periods.

Valve must be maneuver every 3 month; this frequency must be increased for waters with a French hardness over 50°.

